

**Combermere Lodge Ltd. Zoning
By-Law Amendment Sketch**
Part of Lots 2, 3, & 4, Concession 9
Part of Lots 2, 3, 4 & 5 Concession 8
Geographic Township of Radcliffe
Township of Madawaska Valley
County of Renfrew



- Legend**
- Lands to be Re-Zoned
 - Wetlands (mapped by Geofirma)
 - Waterbodies

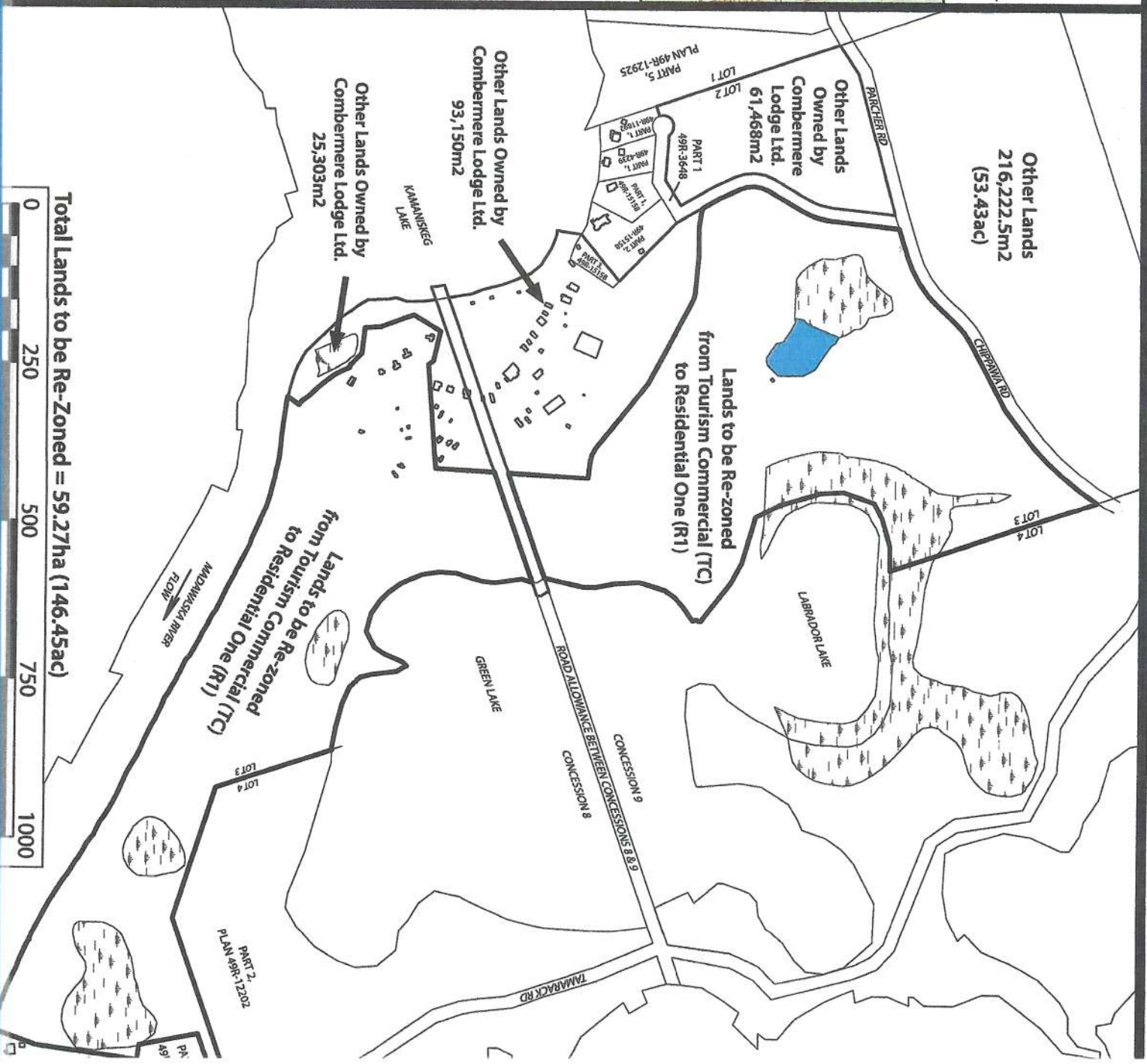
Notes:

1. Boundary of the subject property, road allowances, and shorelines derived by Adam Kasprzak Surveying Ltd.
2. Locations of the local wetlands derived from the EIS Report completed by Geofirma Engineering.

ZONDERPLAN
Your rural land planning experts



Total Lands to be Re-Zoned = 59.27ha (146.45ac)



Subdivision / Condo New Concept
 44 Lots Proposed
 Part of Lots 2, 3, & 4, Concession 9
 Part of Lots 2, 3, 4 & 5 Concession 8
 Geographic Township of Radcliffe
 Township of Madawaska Valley
 County of Renfrew



Other Lands
 216,222.5m²
 (53.43ac)

Other Lands Owned by
 Combermere
 Lodge Ltd.
 61,468m²

Other Lands Owned by
 Combermere Lodge Ltd.
 93,150m²

Other Lands Owned by
 Combermere Lodge Ltd.
 25,303m²

Total Lands for Development = 59.27 ha (146.45ac)

Legend

- Subdivision Boundary Line
- Edge of Road
- Centreline of Road
- Lot Lines
- Block Lines
- Shoreline 2017
- Original Shoreline
- WS Shoreline
- 10m Construction Setback
- 30m Construction Setback
- 30m No Disturbance Setback
- Wetlands (mapped by Geofirma)
- Waterbodies

Notes:

1. Boundary of the subject property, road allowances, and shorelines derived by Adam Kasprzak Surveying Ltd.
2. Locations of the local wetlands derived from the EIS Report completed by Geofirma Engineering.

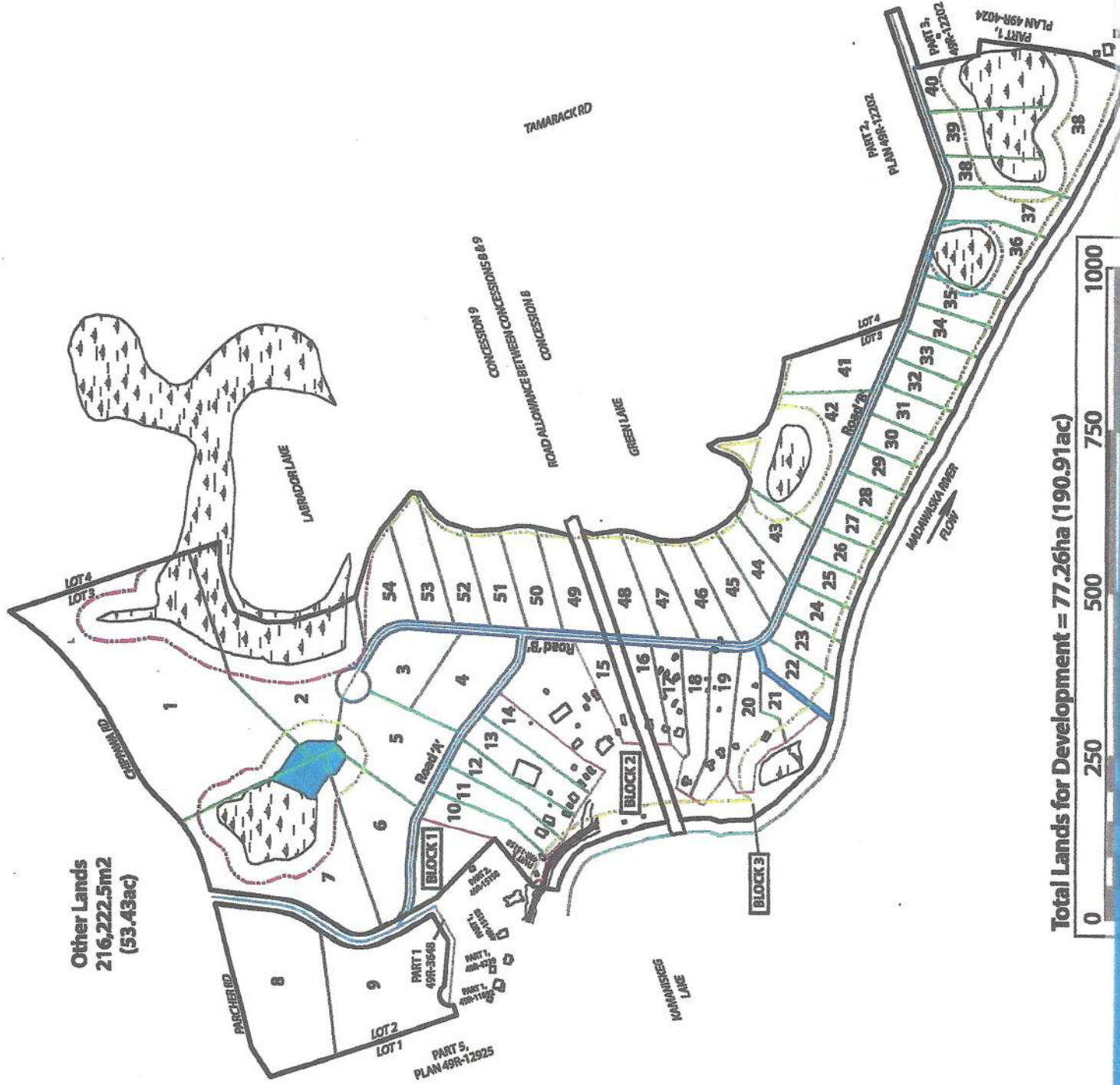
ZONDERPLAN
 Your rural land planning experts
 Version Date: February 13, 2019

Subdivision / Condo New Concept

54 Lots Proposed
 Part of Lots 2, 3, & 4, Concession 9
 Part of Lots 2, 3, 4 & 5 Concession 8
 Geographic Township of Radcliffe
 Township of Madawaska Valley
 County of Renfrew



Other Lands
 216,222.5m²
 (53.43ac)



Total Lands for Development = 77.26ha (190.91ac)



Legend

- Subdivision Boundary Line
- Edge of Road
- Centreline of Road
- Lot Lines
- Block Lines
- Shoreline 2017
- Original Shoreline
- WS Shoreline
- 10m Construction Setback
- 30m Construction Setback
- 30m No Disturbance Setback
- Wetlands (mapped by Geofirma)
- Waterbodies

Notes:

1. Boundary of the subject property, road allowances, and shorelines derived by Adam Kasprzak Surveying Ltd.
2. Locations of the local wetlands derived from the EIS Report completed by Geofirma Engineering.

ZANDERPLON
 Your rural land planning experts